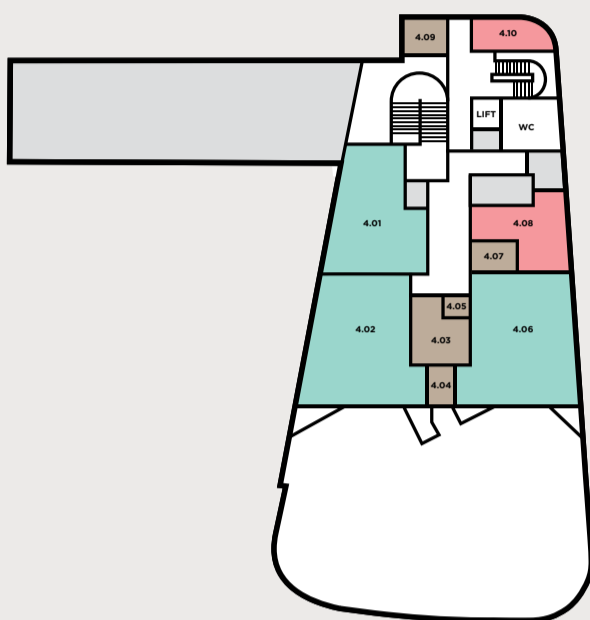


**KEY**

- Academic**
  - 3.01, 3.03, 3.04, 3.05, 3.08, 3.09 - 3.11, 3.14, 3.17, 3.18 - 3.23
  - English 3.08, 3.11
  - Humanities 3.14, 3.17
  - IT 3.21, 3.22
  - Juniors 3.19, 3.20
  - Mathematics 3.01, 3.05, 3.18
  - Modern Foreign Languages 3.03, 3.04, 3.09, 3.10
  - Multi-Subject Classroom 3.23
- Administration Marketing and Development 3.24
- Storage**
  - Academic 3.02, 3.06, 3.07, 3.12, 3.13, 3.15, 3.16
  - Operational 3.28

3

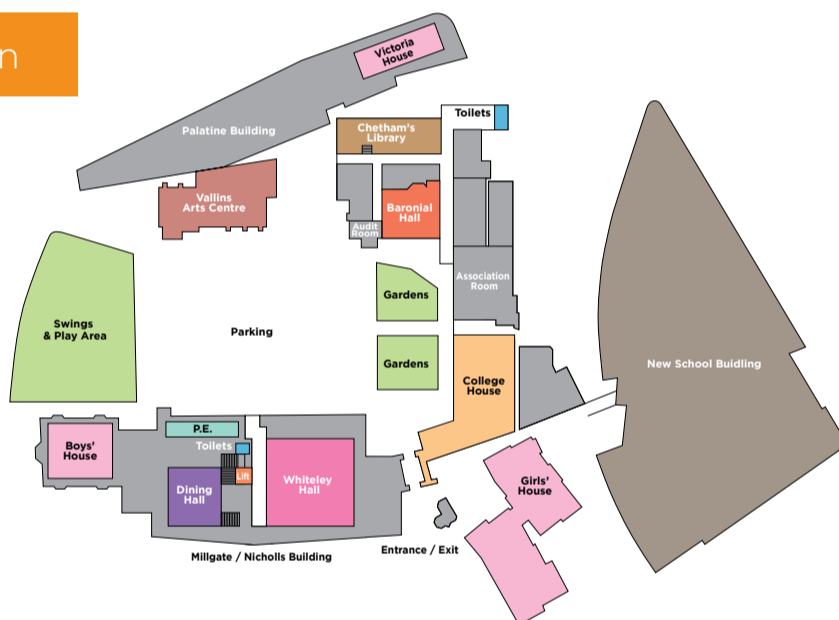


**KEY**

- Administration**
  - IT 4.08
  - Information Manager 4.10
- Science**
  - Biology 4.02
  - Chemistry 4.06
  - Physics 4.01
- Storage**
  - Science 4.03 - 4.05, 4.07
  - Operational 4.09

4

Site Plan



**KEY**

- College House**
- Ground Level - Management and Administration**
  - Head
  - Deputy Heads
  - Bursar
- Level 1**
  - School Library
  - Compensatory Education (Access via the stairwell to the Gatehouse)
- Vallins Arts Centre**
  - Art
  - Drama
- Millgate / Nicholls Building**
  - P.E.
- Boarding Accommodation**
  - Boys' House
  - Girls' House
  - Victoria House

Chetham's New School Building

The new home for Chetham's School of Music features performance spaces, a dedicated area for outreach work, a central atrium, music practice and teaching rooms, and academic classrooms.

The completion of this £31 million capital project is just the first step in a series of major developments that will change the internal facilities and the public face of Chetham's.

Find out more at [www.chethams.com](http://www.chethams.com)

Reg Charity 526702

Chetham's School of Music  
Manchester M3 1SB

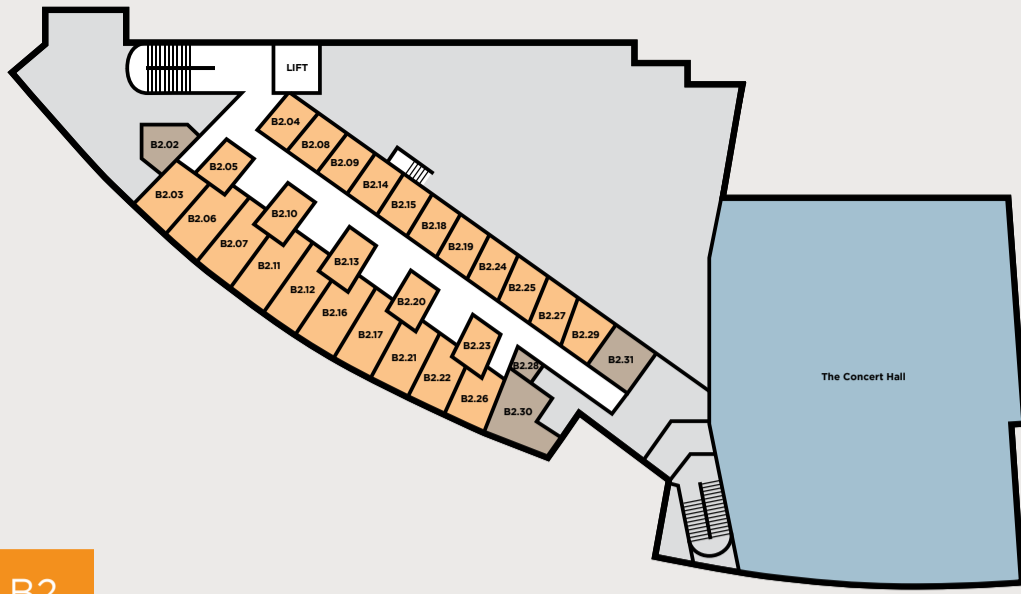
**Music Rooms**  
Levels B2, B1, Ground, 1 and 2

**Academic Rooms**  
Levels 3 and 4

The following departments can still be found on the original site  
Art, Drama, PE, Compensatory Education, School Library, Catering, Head, Deputy Heads and Bursar.



Chetham's  
School of Music



### KEY

#### Performance

■ The Concert Hall

#### Practice

■ B2.03 - B2.27, B2.29

#### Storage

■ Music B2.02

■ Operational B2.28, B2.30, B2.31

B2



### KEY

#### Performance

■ The Concert Hall

■ The Carole Nash Hall

#### Music Technology

■ B1.11 - B1.24

#### Practice

■ B1.26 - B1.48

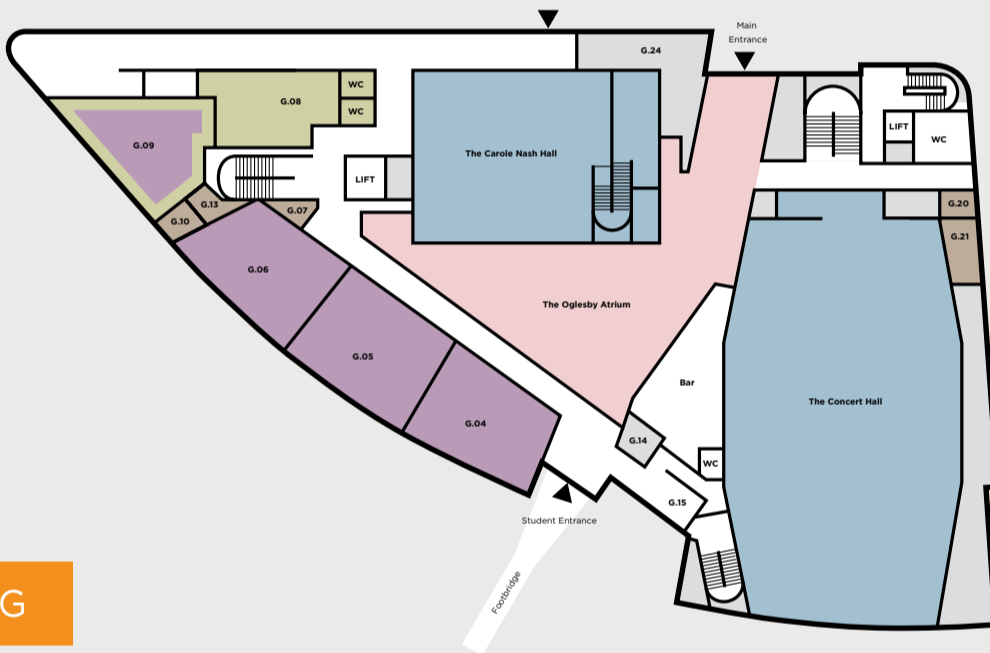
■ Practice Office B1.25

#### Storage

■ Music B1.07, B1.08, B1.09

■ Operational B1.01, B1.02, B1.03, B1.05, B1.49

B1



### KEY

#### Performance

■ The Concert Hall

■ The Carole Nash Hall

#### Ensemble Rooms

■ G.04 - G.06, G.09

#### The Outreach Centre

■ G.08, G.09

#### Security Desk

G.14

#### Visitors' Waiting Area

G.15

#### Box Office

G.24

#### Storage

■ Music G.07, G.10, G.13

■ Operational G.20, G.21

G



### KEY

#### Music Administration

■ Director of Music 1.03

■ Music Office 1.01

■ Concerts and Timetabling Office 1.05

■ Music Department Coordinator 1.44

■ Music Staff Room 1.41

■ Meeting Room 1.43

#### Music in the Curriculum

■ 1.02, 1.04, 1.06, 1.08, 1.10, 1.12, 1.13

■ Head of Music in the Curriculum 1.07

#### Percussion

■ 1.14 - 1.17, 1.19

#### Woodwind and Brass

■ 1.20, 1.25, 1.27, 1.28, 1.30, 1.31, 1.33, 1.34, 1.38 - 1.40

■ Head of Woodwind 1.36

■ Head of Brass and Percussion 1.37

#### Practice

■ 1.18, 1.21, 1.26, 1.29, 1.32, 1.35

#### Storage

■ Music 1.42, 1.46

■ Operational 1.45

1



### KEY

#### Accompaniment

■ 2.34, 2.39, 2.40, 2.46

■ Head of Accompaniment 2.33, 2.44

#### Composition

■ Head of Composition 2.46

#### Keyboard

■ 2.01 - 2.09, 2.11, 2.12, 2.14

■ Head of Keyboard 2.16

■ Keyboard Office 2.10

#### Strings

■ 2.17, 2.18, 2.20, 2.21, 2.23, 2.25, 2.26

■ Head of Strings 2.19

■ Assistant Head of Strings 2.22

#### Practice

■ 2.24, 2.27, 2.32, 2.35, 2.38, 2.41

#### Vocal and Additional Instrumental

■ 2.31, 2.36, 2.37, 2.42, 2.43, 2.45

#### Storage

■ Music 2.47, 2.49

■ Operational 2.13, 2.48

2